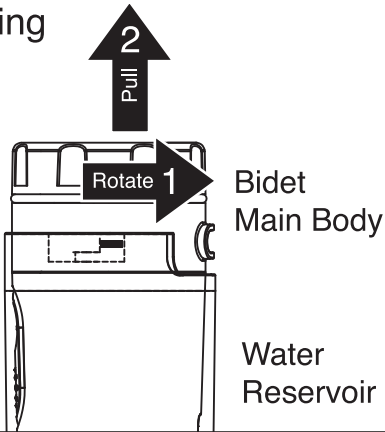




**BLAUX**   
PORTABLE BIDET

# ⚠ WARNING ⚠

## Unlocking



The detachable water reservoir may be in locked position upon arrival. Please follow the instructions below to unlock and detach the bidet from the water reservoir before use.

1. Hold the water reservoir firmly and rotate bidet main body counter-clockwise to unlock
2. Pull the bidet main body up from the water reservoir to remove

## Product Introduction

Thank you for purchasing the Blaux Portable Bidet! The modern, rechargeable, and portable design is compact and powerful. The 5.75 fl oz / 170 ml reservoir can be detached as well for even more compact storage. It fits nicely in the hand for easy, comfortable use.

## Features



Compact design



Comfortable, cleansing spray



5.75 fl oz / 170 ml Water reservoir



Up to 30 days battery standby



Lightweight (only 8.3 oz / 235 g)



Magnetic charging connection



Water resistant (IPX6 Rated)



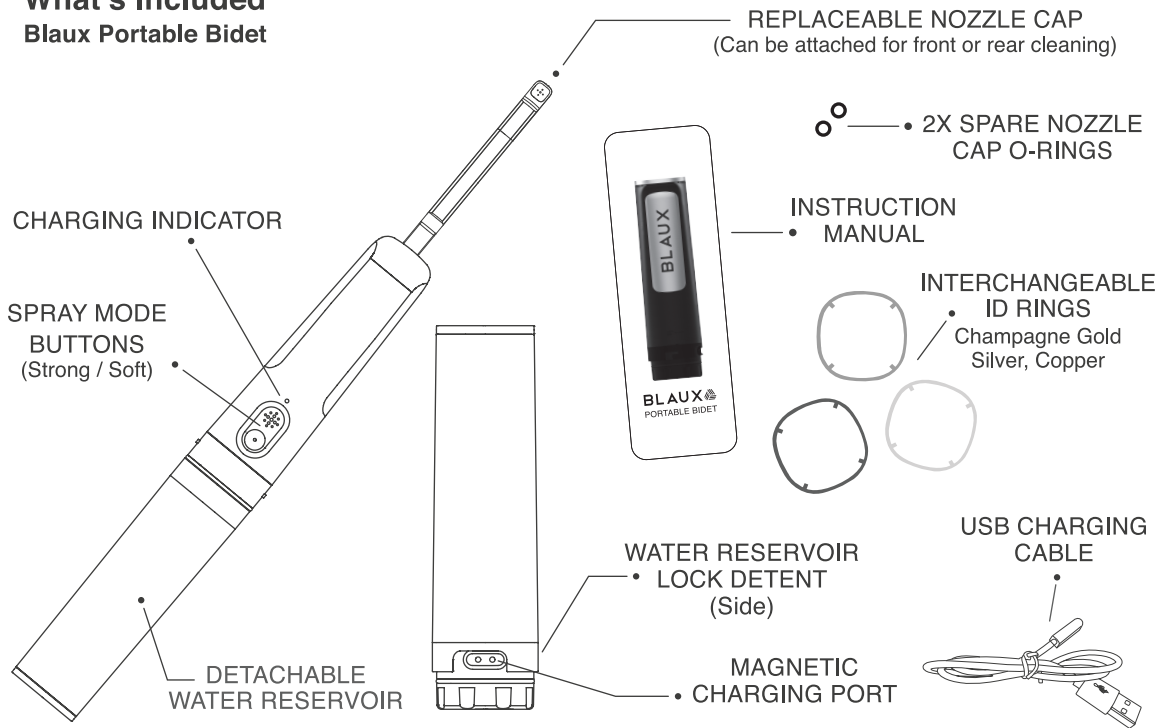
3 ID Rings for personalization



2 Spray modes (Strong / Soft)

# What's Included

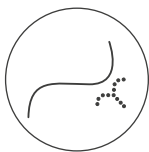
## Blaux Portable Bidet



## Applications



Front Cleaning



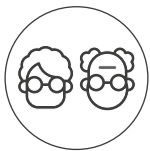
Rear Cleaning



Infant Diaper Cleaning



Handicapped Cleaning



Elderly Cleaning



Public Toilets

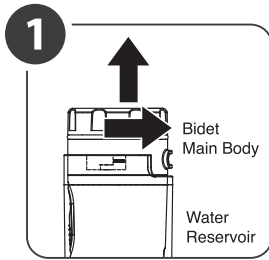


Business & Travel Use



Outdoor Activities

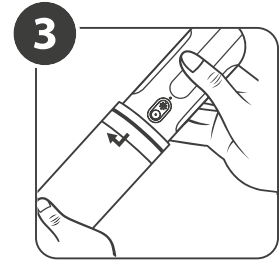
# How To Use



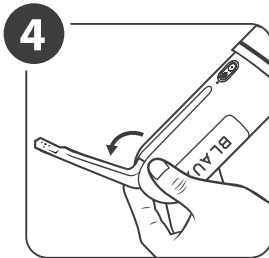
Turn and pull the bidet body out from the water reservoir.



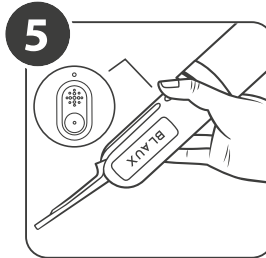
Fill the water reservoir with clean water (max. 5.75 fl oz / 170 ml).



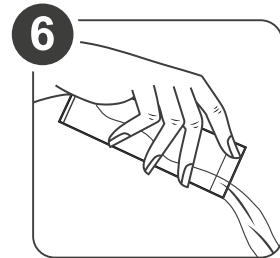
Secure the grooved end and align the notch, rotate to lock water reservoir by matching the notches.



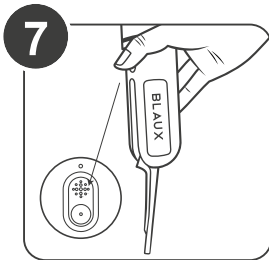
Pull the notch of the cleaning wand base to deploy.



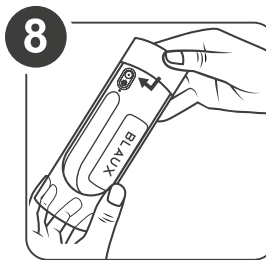
Press either the soft mode or strong mode button for desired pressure.



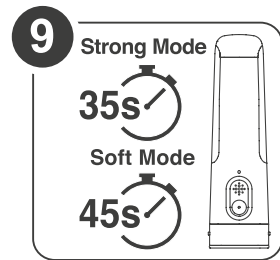
After use, remove the reservoir and drain the excess water.



Have the bidet wand facing down and press the strong mode button to expel excess water from the device.



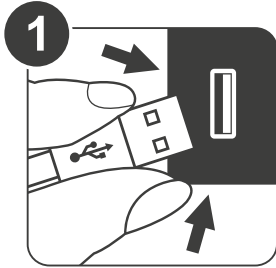
Clean the bidet wand body, and reservoir. Insert the bidet body into the reservoir by rotate to lock.



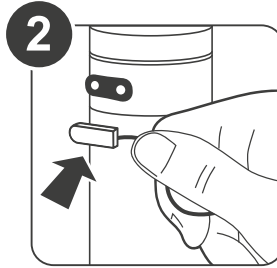
The bidet will automatically shut off after 35 seconds for strong mode and 45 seconds for soft mode.

## Recharging Your Blaux Portable Bidet

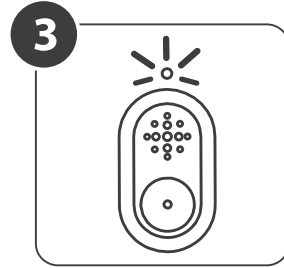
Charge your Blaux Portable Bidet with the supplied USB charging cable before use. When the battery is low, the LED indicator near the buttons will be flashing RED and the spray pressure will decrease and eventually stop. Charge the bidet with the supplied USB charging cable to avoid battery damage, the magnetic connector can only be placed in one direction.



1  
Connect the 5V USB cable to a power source.



2  
Connect the magnetic plug to the bidet to start charging. The magnetic connector can only be placed in one direction. The LED indicator near the buttons will be lit solid RED when charging.



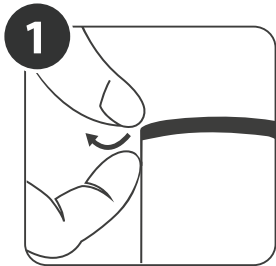
3  
When the battery is full, the LED indicator will shut off automatically. Unplug the charging cable.

### Battery Status LED Indication

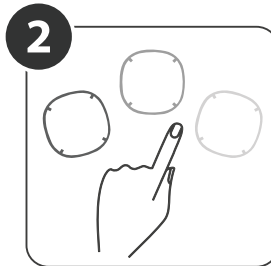
|               |                         |
|---------------|-------------------------|
| Low           | Flashing red when on    |
| Charging      | Solid red               |
| Fully charged | Turns off automatically |

## Changing ID Rings

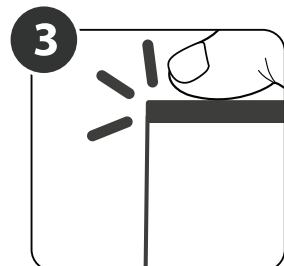
The ID ring is connected to the base of the water reservoir. The rings are changeable to suit your preference and to differentiate from others.



1  
Use your fingernail to lift the color ID ring from the base of the water reservoir to remove.

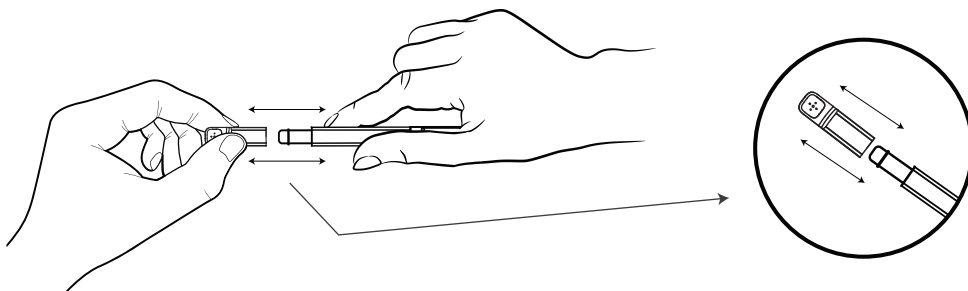


2  
Select desired color (Champagne Gold, Silver, or Copper) and place it on the base.



3  
Make sure the ID ring is firmly in place before use.

## Changing Bidet Nozzle Orientation



The bidet nozzle orientation can be changed depending on your handling preference. To change the nozzle, hold the nozzle firmly and pull from the wand. The nozzle is tightly fitted and require some force to undo, this is normal for water sealing purpose. Please inspect the water seal O-ring on the wand before inserting the nozzle. Orientate the nozzle (front or backward facing), push-in to fasten.

## Specifications

|                          |                                  |
|--------------------------|----------------------------------|
| Stored Dimension         | 2" x 2" x 7" / 50 x 50 x 170 mm  |
| Fully Extended Dimension | 2" x 2" x 16" / 50 x 50 x 405 mm |
| Product Weight           | 8.3 oz / 235 g                   |
| Reservoir Volume         | 5.75 fl oz / 170 ml              |
| Run Time (Soft Mode)     | Around 100 cycles                |
| Run Time (Strong Mode)   | Around 80 cycles                 |
| Water Resistant          | IPX6                             |
| Working Output Current   | <420 mA                          |
| Input Power              | DC 5 V / 1000 mA                 |
| Power Source             | 4.2 V / 800 mA                   |
| Standby Time             | Up to 30 days                    |
| Battery Charging Time    | Around 2 hours                   |

## Note

- This bidet is intended for external use only
- Do not immerse the bidet into water
- Avoid filling with water above 104°F / 40°C
- Clean the bidet body, cleaning wand, and water reservoir on a regular basis to avoid harmful bacteria growth
- For proper cleansing, use the bidet by spraying the target area in a circular motion

## Contact Info

Thank you for purchasing Blaux Portable Bidet.

If you have any inquiries, please visit:

**<https://support.blauxstore.com/>**

Our customer support team is happy to help!



At the end of its service life, this product may not be disposed of in the normal household waste, but rather must be disposed of at a collection point for recycling electrical and electronic devices. The materials are recyclable according to their labeling. You make an important contribution to protecting our environment by reusing, recycling, or utilizing old devices in other ways. Please ask the municipal administration where the appropriate disposal facility is located.